

BANGLADESH STUDIES

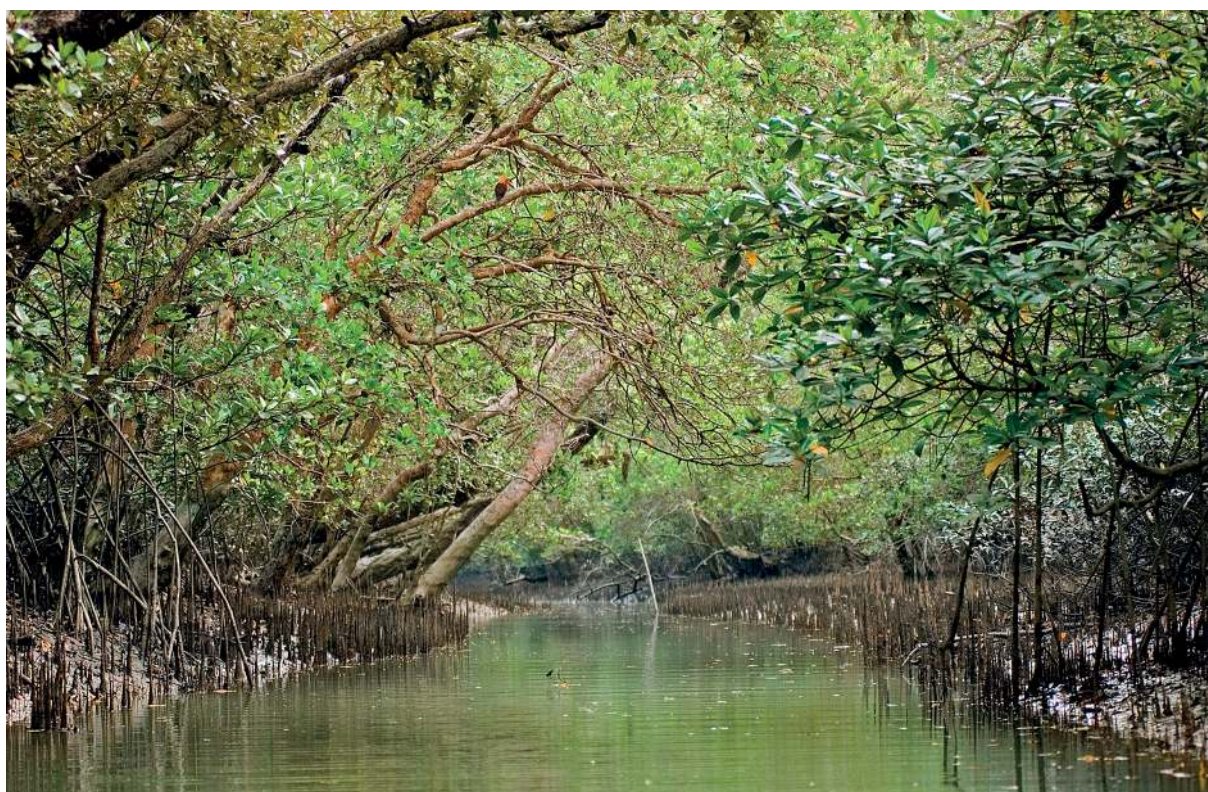
Paper 2

INSERT

0449/02

May/June 2014

1 hour 30 minutes



Photograph A for Question 2

This document consists of **1** printed page and **1** blank page.



BLANK PAGE

Copyright Acknowledgements:

- Question 2(d)(i) Ref: AGHNPG; © Images&Stories/Alamy; *Mangrove forests in Kotka coast of Bangladesh*; www.alamy.com.
Question 3(b)(i) adapted: *Bangladesh economy growth 'best in decades'*; Tribune Company; <http://tribune.com.pk/story/179481/bangladesh-economy-growth-best-in-decades/>.
Question 4(c) adapted: *Bangladesh Glass industry meets 95pc local demand*; Positive Bangladesh;
<http://positivebangladesh.wordpress.com/2008/06/26/bangladesh-glass-industry-meets-95pc-local-demand/>; 26 June 2008.

Permission to reproduce items where third-party owned material protected by copyright is included has been sought and cleared where possible. Every reasonable effort has been made by the publisher (UCLES) to trace copyright holders, but if any items requiring clearance have unwittingly been included, the publisher will be pleased to make amends at the earliest possible opportunity.

Cambridge International Examinations is part of the Cambridge Assessment Group. Cambridge Assessment is the brand name of University of Cambridge Local Examinations Syndicate (UCLES), which is itself a department of the University of Cambridge.